

CellPathfinder supports the image data acquired by Yokogawa imaging systems CQ1 and CellVoyager.

Confocal Quantitative Image Cytometer **CQ1**

- Bench top size confocal system
- Simple operation and automated image acquisition of many sample
- Live cell imaging



High-throughput Cytological Discovery System

CellVoyager

- Ultimate HCA system for high-quality imaging and high-throughput screening with water immersion objectives and multiple cameras
- Built-in robot pipetter for kinetic assays



System configuration:

- Software
- Workstation
- Displays

Specifications of the workstation

Model: Dell Precision T5810XL

CPU: Intel® Xeon® E5-1620 v4

Memory:128 GB

HDD: System (C:) 4TB

Storage (D:) 4TB

OS: Windows® 10 Pro 64 bit Japanese/English

Display: 1920×1200, dual monitor

※Data acquired in CellVoyager CV1000 are not supported.

※CellPathfinder system contain the software and the workstation.



Yokogawa Electric Corporation
Life Science Center
E-mail csu_livecell_imaging@cs.jp.yokogawa.com
Web site <http://www.yokogawa.co.jp/scanner>

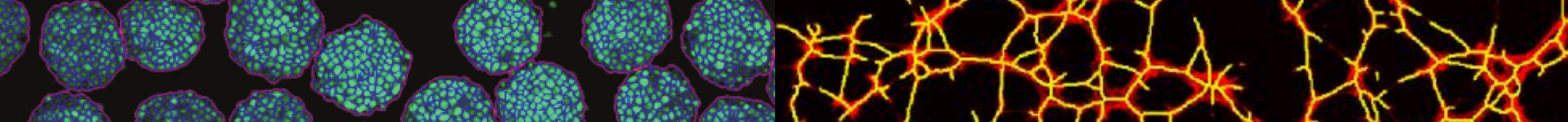
Kanazawa 2-3 Hokuyoudai, Kanazawa-shi, Ishikawa 920-0177, Japan
Phone +81-76-258-7028, FAX +81-76-258-7029
Tokyo 2-9-32 Nakacho, Musashino-shi, Tokyo 180-8750, Japan
Phone +81-422-52-5550, FAX +81-422-52-7300

Represented by

High Content Analysis Software

CellPathfinder™

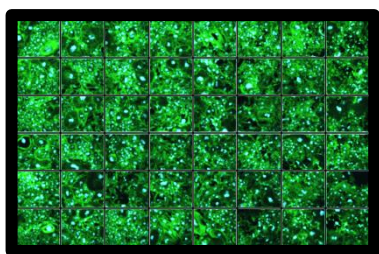
- Abundant ready-to-use analysis templates
- Powerful machine learning for label-free analysis
- Quick overview in multi-well/multi-field image viewer
- Easy creation of merged images, movies and graphs



Analyze your data easily

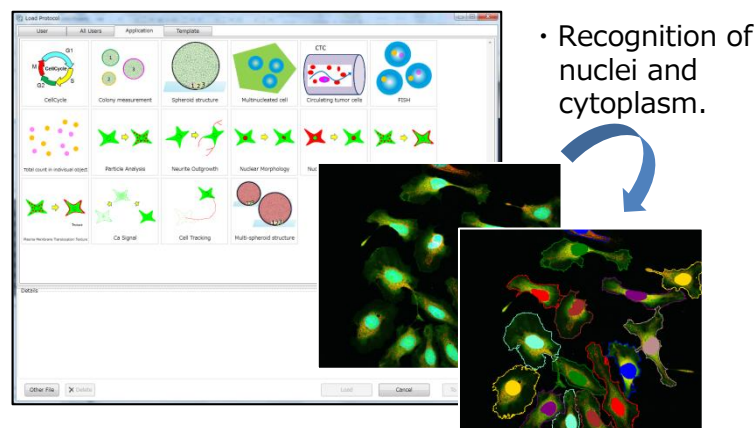
◆ Simple workflow from images to analysis and graphs

1. Display image data



- Quick overview of all wells in multi-image view

2. Load and execute analysis protocol

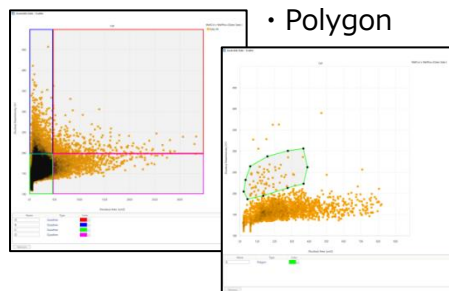


- Recognition of nuclei and cytoplasm.

- Easy-to-understand graphical icons
- Choose a preset template for your analysis

3. Gating

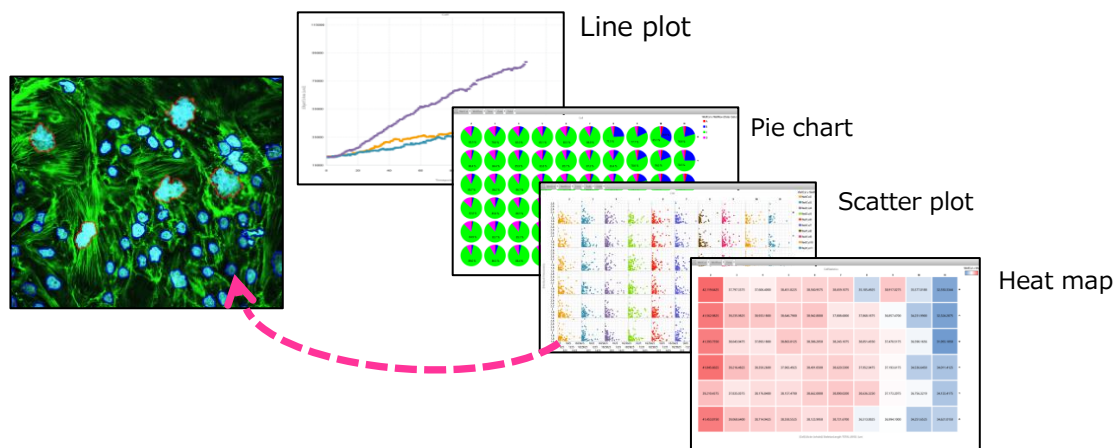
- Quad tree
- Polygon



- Specific populations can be extracted by gating the feature value data of recognized objects.
- The extracted populations can be analyzed further.

4. Make the graphs

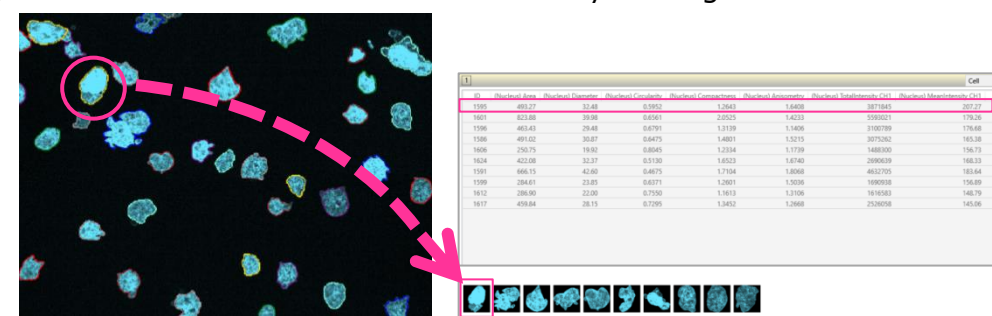
- Various graph options to visualize the results
- The link between graph and images enables quick visual check of images by clicking data points



5. To examine further details...

list the profiles of interesting cells

- Images and numerical data can be collected by clicking cells.

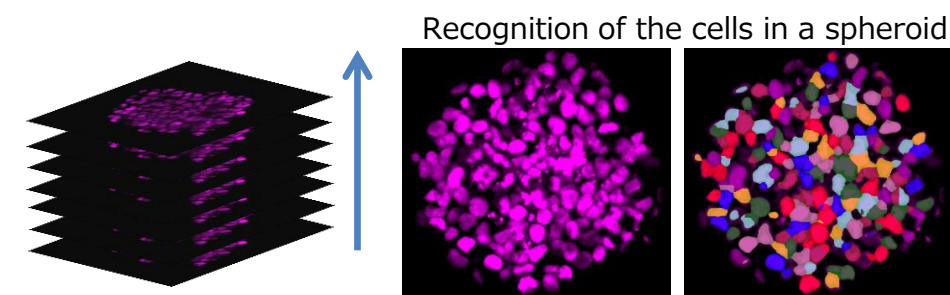


Abundant analysis functions make your applications possible

- Basic and Advance analysis modes are implemented.
- Beginners can perform quantitative analysis in Basic mode.
- Experts can flexibly customize the analysis in Advance mode.

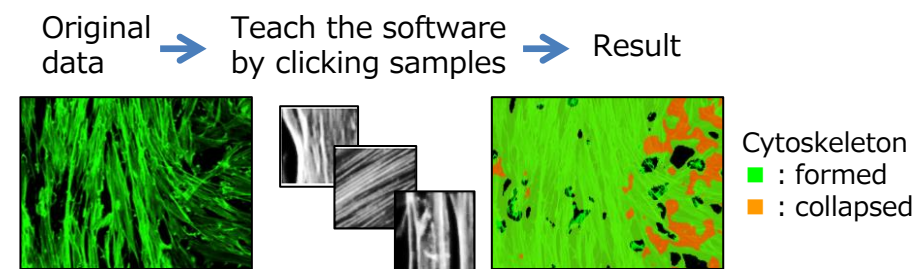
◆ 3D analysis

- Analysis of Z-stack images in three-dimensional space.
- The volume and the location of objects in 3D space can be quantified.



◆ Recognition of cytoskeleton by machine learning

- Software learns the features of the sample objects to analyze the images.



◆ Label-free analysis

- Machine learning algorithm can recognize nuclei and cell bodies in unstained bright field images.

