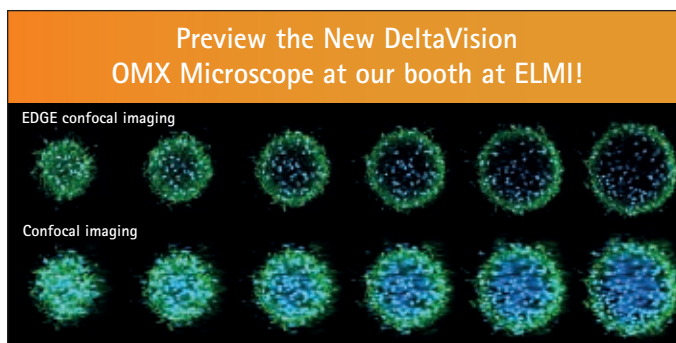


SHOWCASE |

DeltaVision OMX Microscope: More Flexibility

The new GE Healthcare DeltaVision OMX microscope with EDGE confocal imaging: the next generation super-resolution microscope.

- A full range of imaging modes, including structured illumination, localization and line scanning confocal microscopy capabilities, provides a new level of flexibility.
- Each technology is designed to maximize light efficiency, allowing users to reduce photobleaching or extend imaging time for truly sensitive imaging.
- Fully answer your scientific questions without having to move between instruments. Switching between imaging modes is quick and easy, even for the occasional user.



500 μm thick brain organoid acquired on IN Cell Analyzer 6500HS with EDGE confocal and SmartScan technologies. Each image is a maximum intensity projection of 20 Z sections with GFAP in green and Nuclei in blue.

Get more information from one instrument in one imaging session, using the same cells for all your analyses. Combining improved sensitivity with imaging mode flexibility enhances productivity and delivers useful publication-quality results fast.

Key Features:

- Designed for convenience, efficiency, sensitivity and results.
- EDGE enhanced confocal imaging improves resolution and contrast

- Easily switch between multiple imaging modes with one click
- Improved system sensitivity uses less light, reduces photobleaching



Product Support Team:
contact.cells@ge.com
gelifesciences.com/cellanalysis